

# BALL VALVES

## ZK/S, ZK/P, ZK/G, ZK/B

**Nominal diameter range: 15 to 150 mm.**



The technical design of these valves is a solution that guarantees work safety and their long term operating efficiency. They are throughway valves (in open position the ball does not disrupt the flow of the medium), and a special system of spindle sealing at the same time prevents it from being pushed out.

The ball, made of acid resistant steel, has antistatic protection in the form of a brazen insert or spring that is designed to conduct the electrostatic charge away from the ball and onto the casing. The ball has a P.T.F.E. seal (teflon). Ball valves can operate in any position.

**ZK/S** – The ball is made of acid resistant steel and the casing is made of high resistance P355 steel. The valve is painted blue or yellow depending on its application.

Working medium: LPG, mineral and synthetic oil, kerosene, flammable and inflammable gases, ethyl gasoline, diesel oil, grease, solvent, hydraulic and brake fluids, water, steam and other non-aggressive substances.

Working parameters for ZK/S 15÷100

Working pressure: 25 bar

Temperature range: - 40°C / +200°C.

Working parameters for ZK/S 125, ZK/S 150, ZK/S 125b, ZK/S 150b

Working pressure: 16 bar

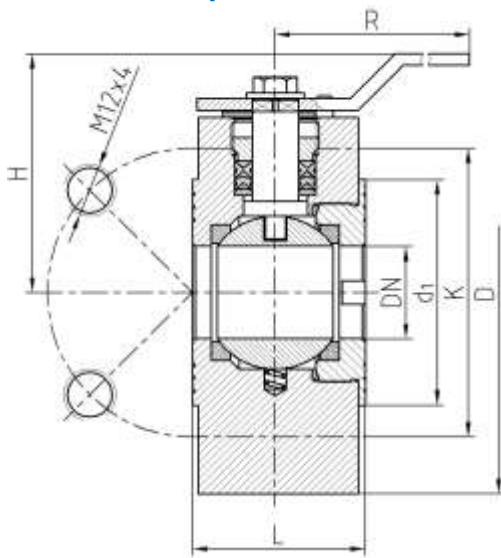
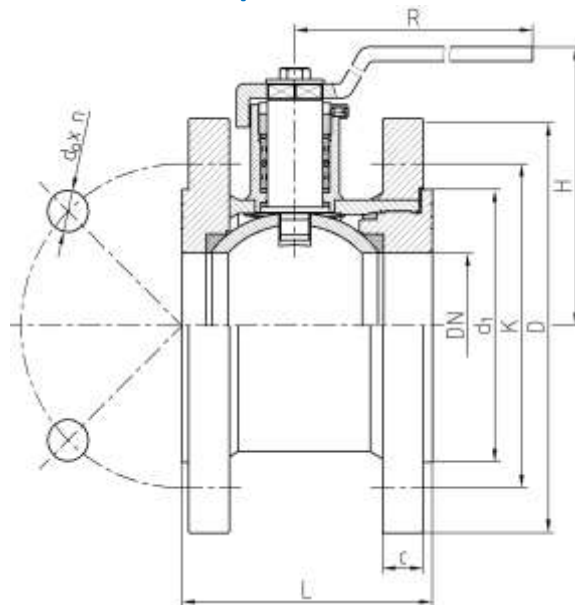
Temperature range: - 40°C / +200°C.

**ZK/P** – All parts (together with the casing) are made of acid resistant or stainless steel.

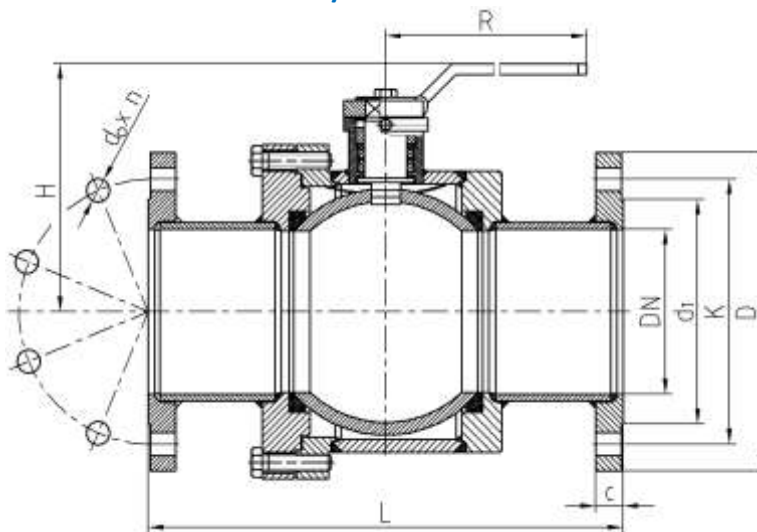
Working medium: drinkable water, consumable liquids, acid and basic solutions, glycol, consumable oils and others as before. Working parameters are identical to ZK/S.

**ZK/G** – The ball is made of acid resistant steel and the casing is made of high resistance P355 steel. The valves have threaded connector pipes. Working parameters are identical to ZK/S.

**ZK/B** – The valves have terminals to be welded on. Working parameters are identical to ZK/S.

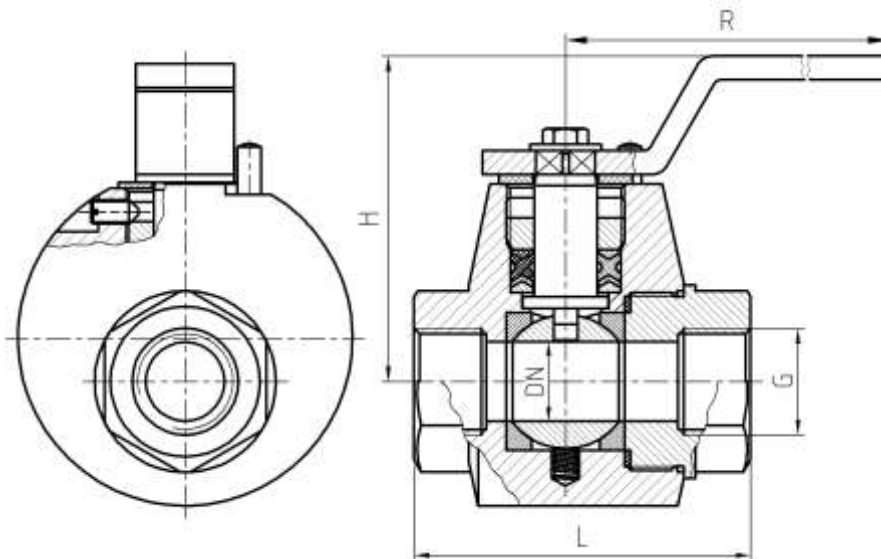
**ZK/S 10-32****ZK/S 40-100****BALL VALVES – dimensions (mm)**

Type and DN	L	H	R	D	K	d <sub>1</sub>	c	d <sub>o</sub> xn		Weight kg
ZK/S 15	46	77	130	95	65	47	–	M12x4	–	2,3
ZK/S 20	50	83	130	105	75	58	–	M12x4	–	2,9
ZK/S 25	51	88	130	115	85	68	–	M12x4	–	3,7
ZK/S 32	60	95	168	140	100	78	–	M12x4	–	5,8
ZK/S 40	88	145	190	150	110	88	18	M16x4	∅18x4	5,8
ZK/S 50	106	155	190	165	125	102	18	M16x4	∅18x4	7,6
ZK/S 65	112	150	275	185	145	122	18	M16x8	∅18x8	10,2
ZK/S 80	140	158	355	200	160	134	20	M16x8	∅18x8	14,5
ZK/S 100 1,6 MPa	160	168	355	220	180	158	20	M16x8	–	17,9
ZK/S 100 2,5 MPa	162	168	355	235	190	158	22	M20x8	–	20,2

**ZK/S 125-150**

Typ i DN	L	H	R	D	K	d <sub>1</sub>	c	d <sub>o</sub> xn	Masa kg
ZK/S 125	400	230	500	270	220	184	24	∅26x8	60,0
ZK/S 150	450	235	600	300	250	212	26	∅26x8	84,3

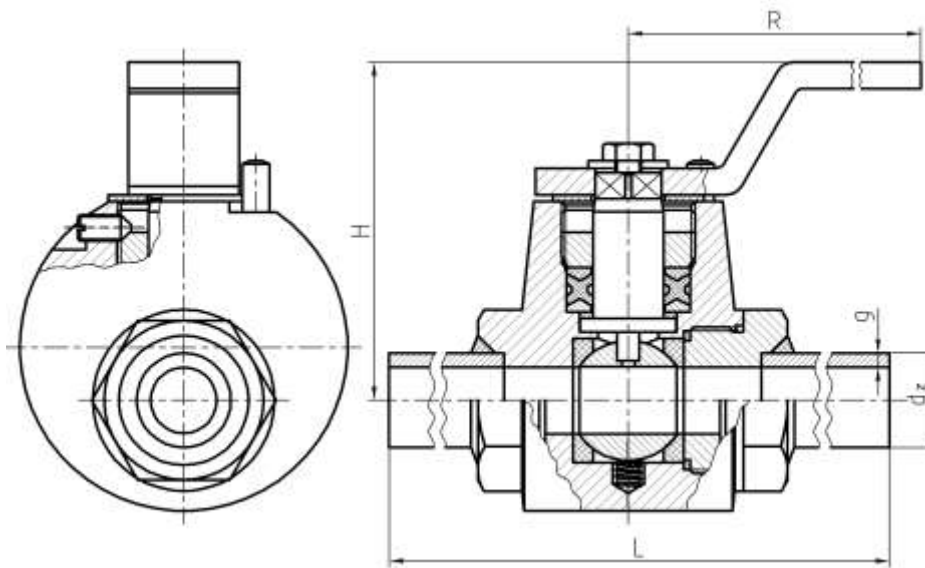
### ZK/G 15, 20, 25



**BALL VALVES – dimensions (mm)**

Type and DN	G	L	H	R	Weight kg
<b>ZK/G 15</b>	½"	75	77	130	1,7
<b>ZK/G 20</b>	¾"	85	83	130	2,3
<b>ZK/G 25</b>	1"	90	88	130	-

### ZK/B 15, 20, 25



**BALL VALVES – dimensions (mm)**

Type and DN	d x p	L	H	R	Weight kg
<b>ZK/B 15</b>	21,3 x 3,2	180	77	130	-
<b>ZK/B 20</b>	26,9 x 3,2	190	83	130	-
<b>ZK/B 25</b>	33,7 x 3,2	200	88	130	-